

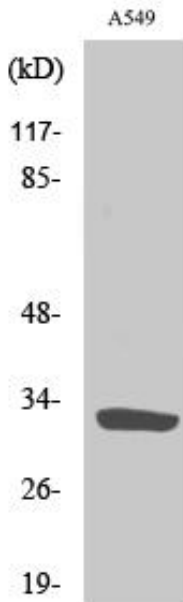


# ZIP9 Polyclonal Antibody

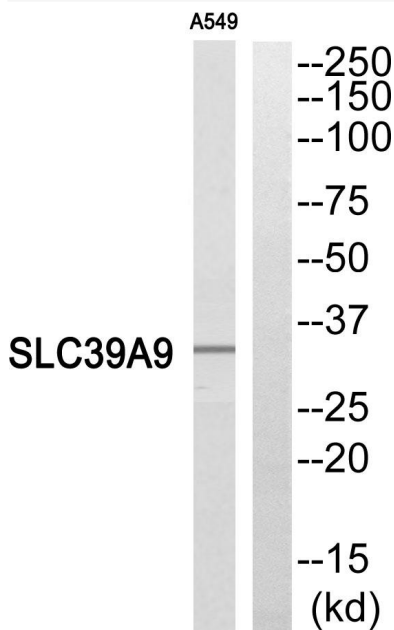
<b>Catalog No</b>	YP-Ab-04276
<b>Isotype</b>	IgG
<b>Reactivity</b>	Human;Rat
<b>Applications</b>	WB;ELISA
<b>Gene Name</b>	SLC39A9
<b>Protein Name</b>	Zinc transporter ZIP9
<b>Immunogen</b>	The antiserum was produced against synthesized peptide derived from human SLC39A9. AA range:101-150
<b>Specificity</b>	ZIP9 Polyclonal Antibody detects endogenous levels of ZIP9 protein.
<b>Formulation</b>	Liquid in PBS containing 50% glycerol, 0.5% BSA and 0.02% sodium azide.
<b>Source</b>	Polyclonal, Rabbit,IgG
<b>Purification</b>	The antibody was affinity-purified from rabbit antiserum by affinity-chromatography using epitope-specific immunogen.
<b>Dilution</b>	Western Blot: 1/500 - 1/2000. ELISA: 1/10000. Not yet tested in other applications.
<b>Concentration</b>	1 mg/ml
<b>Purity</b>	≥90%
<b>Storage Stability</b>	-20°C/1 year
<b>Synonyms</b>	SLC39A9; ZIP9; Zinc transporter ZIP9; Solute carrier family 39 member 9; Zrt- and Irt-like protein 9; ZIP-9
<b>Observed Band</b>	33kD
<b>Cell Pathway</b>	Membrane ; Multi-pass membrane protein .
<b>Tissue Specificity</b>	Coronary artery,Duodenum,Placenta,Skin,
<b>Function</b>	function:May act as a zinc-influx transporter.,similarity:Belongs to the ZIP transporter (TC 2.A.5) family.,
<b>Background</b>	function:May act as a zinc-influx transporter.,similarity:Belongs to the ZIP transporter (TC 2.A.5) family.,
<b>matters needing attention</b>	Avoid repeated freezing and thawing!
<b>Usage suggestions</b>	This product can be used in immunological reaction related experiments. For more information, please consult technical personnel.



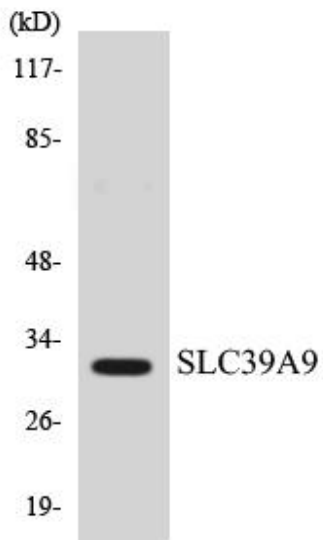
## Products Images



Western Blot analysis of various cells using ZIP9 Polyclonal Antibody. Secondary antibody(catalog#:RS0002) was diluted at 1:20000



Western blot analysis of SLC39A9 Antibody. The lane on the right is blocked with the SLC39A9 peptide.



Western blot analysis of the lysates from HeLa cells using SLC39A9 antibody.

